

Operation & Maintenance Program and System Sampling

ADAM LITKE, ADMINISTRATOR

DAN LARK, REHS (EH DIRECTOR)

CHRIS LOXTERMAN, REHS (EH SUPERVISOR)

KRISTI PINKLEY, REHS



GEAUGA PUBLIC HEALTH
Promoting and Protecting Community Health

What is the O&M Program?

- The Operation & Maintenance program is a statewide initiative to ensure proper ongoing system maintenance of **ALL** Home Sewage Treatment Systems (HSTS) to protect public health and minimize pollution of Ohio waters
- Unfunded mandate by Ohio Department of Health (ODH) in the 2015 rule update



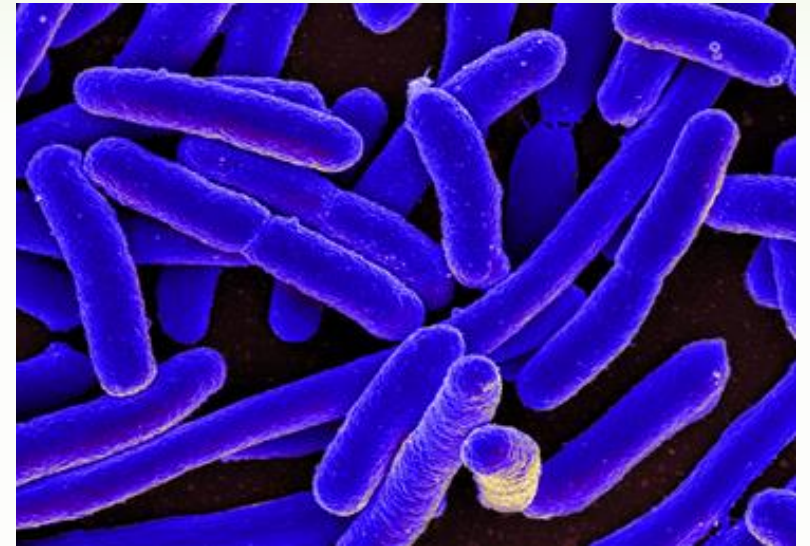
Why were O&M rules passed?

- “Approximately **31%** of all household sewage treatment systems throughout the state of Ohio are experiencing some degree of failure.” – ODH 2012 Clean Watersheds Needs Survey Report
- For Northeast Ohio, was estimated at **38%**
- Although several factors affect system performance (age, water usage, soils, etc.), ongoing maintenance is a significant factor we *can* control



Reasons to Maintain your HSTS

- Safe, Effective, & Enduring Operation
- Protection of individual and community investments
- Decreased impact on water quality and the environment



Basic Overview

- It is estimated that there are approximately **30-40,000** Household Sewage Treatment Systems (HSTS) in Geauga County
- **ALL** are projected to be enrolled in program by 2030
- Program will start with the highest-risk systems:
NPDES & Spray Irrigation

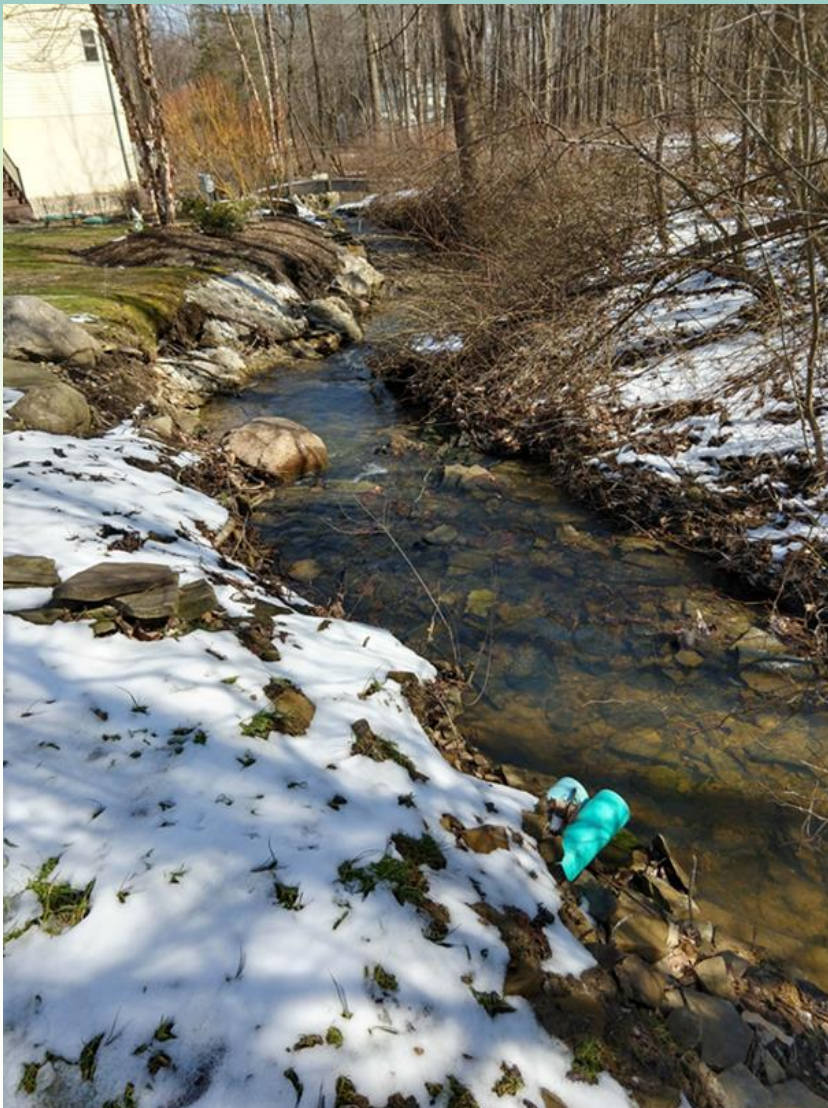


NPDES Systems

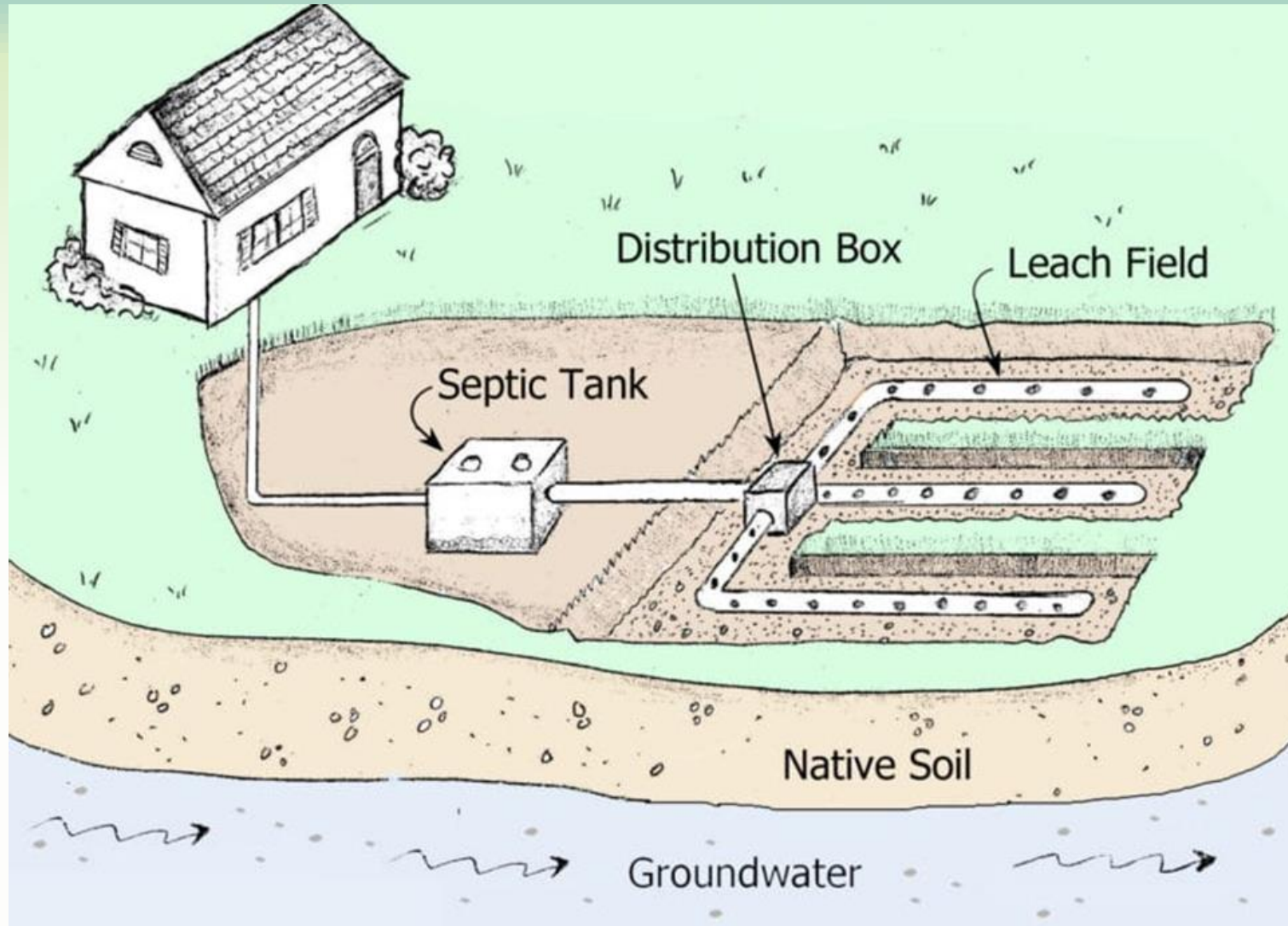
- National Pollutant Discharge Elimination System
- Operate under an Ohio EPA permit to discharge treated wastewater (post-2007)
- Discharge directly to creeks, ditches, storm drains, etc. - **so they better be working!**
- Rely *entirely* on mechanical means for wastewater treatment



NPDES Discharges



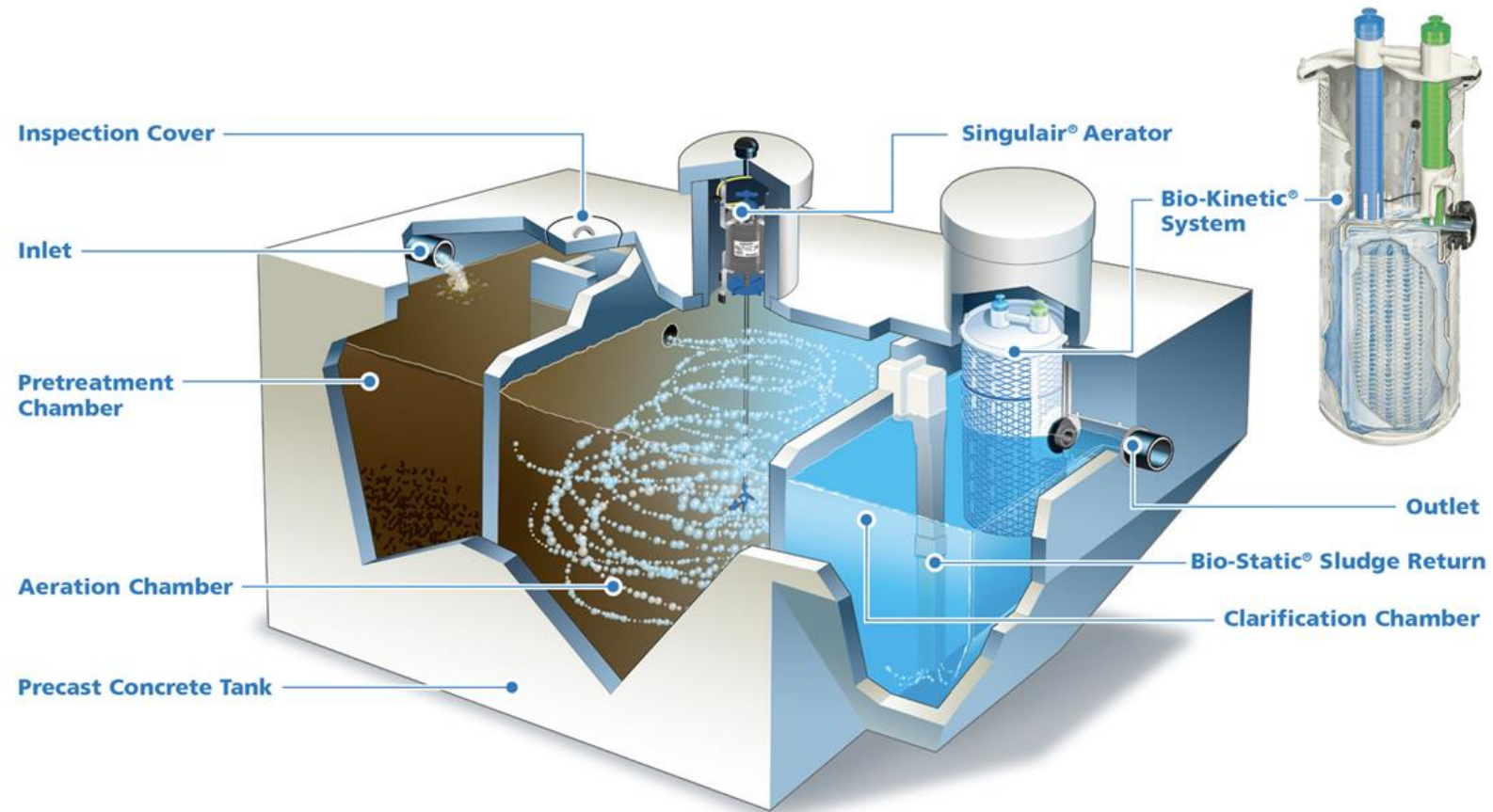
For Comparison



Multiple Manufacturers



...And Treatment Steps



Main Take-Aways

- State requires:
 - Annual system sampling
 - Maintenance Contract over the lifetime of the system for 2 service visits/year
- Policy Change: GPH will now perform all required sampling
 - Prior sampling program through GPH was on a request basis and only had 8% sample rate



Spray Systems

- Similar in design to NPDES, but stricter standards
- Distribute treated effluent to ground surface
- Sampled annually per GPH policy to monitor performance



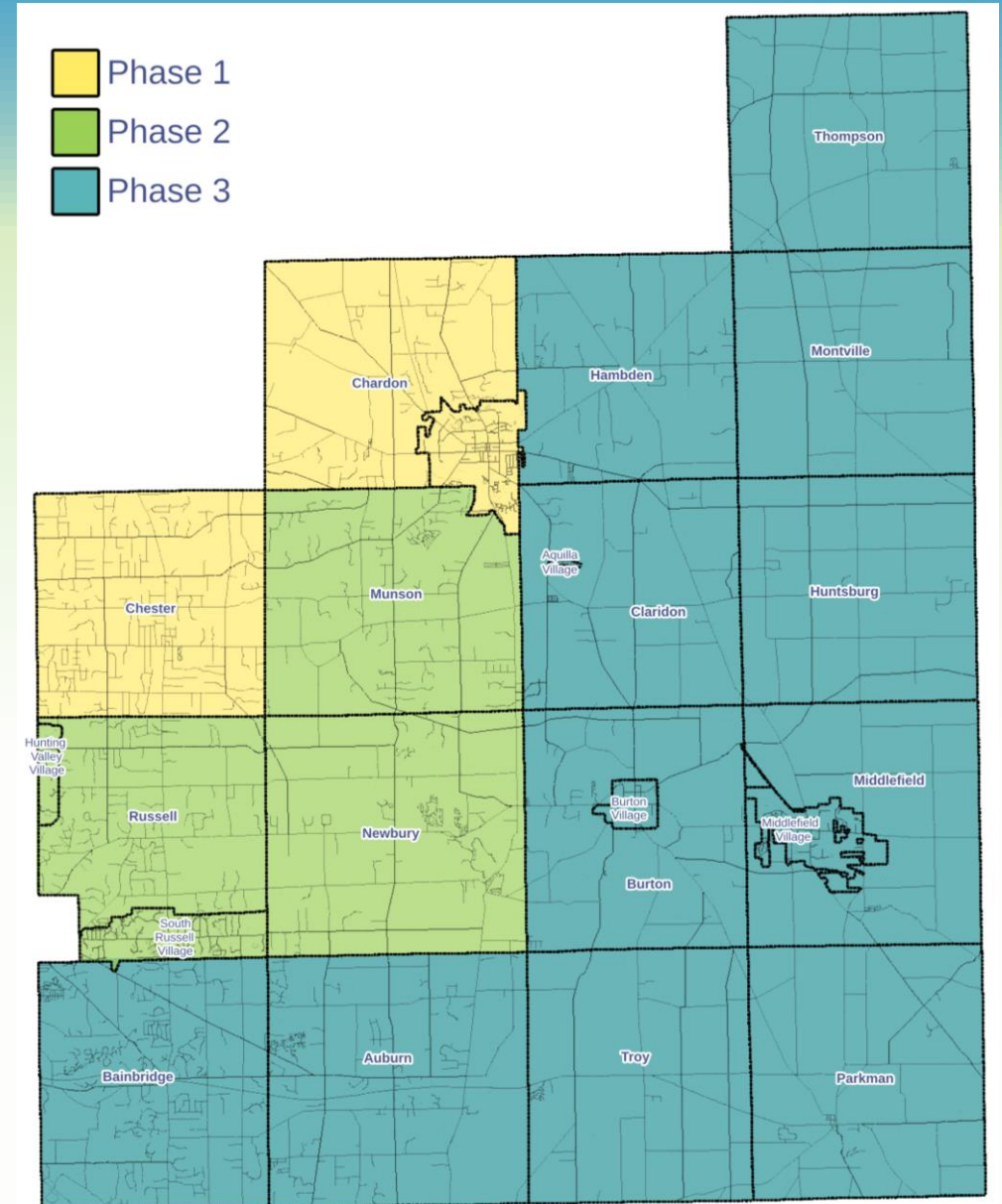
Phased Roll-Out for NPDESs & Sprays

- 3 phases/batches of 600-800 letters spaced equally over the year
 - Even workload distribution over the year
 - Less than 4 months between letter and sample
 - Efficiency of travel for sampling
 - Ability to target public meetings
 - Consistency among neighbors
 - Starting closest to Lake County – familiarity



PHASED ROLL-OUT MAP

- Phase 1: Chester & Chardon Townships
- Phase 2: Munson, Russell, & Newbury
- Phase 3: Remainder of the county
 - Thompson, Hambden, Montville, Claridon, Huntsburg, Burton, Middlefield, Bainbridge, Auburn, Troy, & Parkman



Sampling Process

- Owners are notified by mail at least 1 month prior to sample fee due date
- 2 weeks before deadline, a reminder post card will be mailed
- The fee amount will depend on whether system is a NPDES or Spray Irrigation System



Sampling Process Continued

- System will be sampled by a GPH sanitarian
- Notice will be left if homeowner isn't home
- Results will be mailed within a few weeks after sample collection
- Any recommended or required actions will be provided with the results
- GPH will follow up if needed



Voluntary FSOP

- For Sale of Property Inspection is no longer mandatory, but available upon request
- \$350 Evaluation
- 1-2 week turn-around
- Will issue orders if system is failing



WPCLF

- Water Pollution Control Loan Fund
- Program to assist homeowner with repair or replacement of failing HSTS
- Funded through the state
- Eligibility is based on household income
- Homeowner must be the primary resident



QUESTIONS?



CONTACT INFORMATION

Geauga Public Health
12611 Ravenwood Dr, Suite 300
Chardon, OH 44024



GEAUGA PUBLIC HEALTH
Promoting and Protecting Community Health

Dan Lark, REHS
EH Director
(440) 279-1915
dlark@geaugacountyhealth.org

Adam Litke
Administrator
(440) 279-1900
alitke@geaugacountyhealth.org

Chris Loxterman, REHS
EH Supervisor
(440) 279-1919
cloxterman@geaugacountyhealth.org

Kristi Pinkley, REHS
Program Staff
(440) 227-6955
kpinkley@geaugacountyhealth.org